



**PENGUMUMAN TRAFIK: PROJEK LRT PENANG – LALUAN MUTIARA (PML)  
19/09/2025**

**PENUTUPAN SEPARA LALUAN JANGKA PANJANG DI JALAN SULTAN AZLAN SHAH (DUA HALA)  
(SUNGAI TIRAM)**

<b>Tarikh</b>	22 September 2025 – 31 Disember 2025
<b>Masa</b>	24 jam
<b>Tempoh</b>	Tiga (3) bulan dan Sepuluh (10) hari
<b>Tujuan</b>	Bagi memberi laluan kepada kerja-kerja awal Projek LRT Pulau Pinang: Laluan Mutiara

Untuk makluman, **penutupan separa lorong jangka panjang akan dilaksanakan di Jalan Sultan Azlan Shah**, berhampiran kawasan **Sungai Tiram**, dari 22 September 2025 hingga 31 Disember 2025. Tempoh masa penutupan adalah 24 jam setiap hari selama tiga (3) bulan dan sepuluh (10) hari.

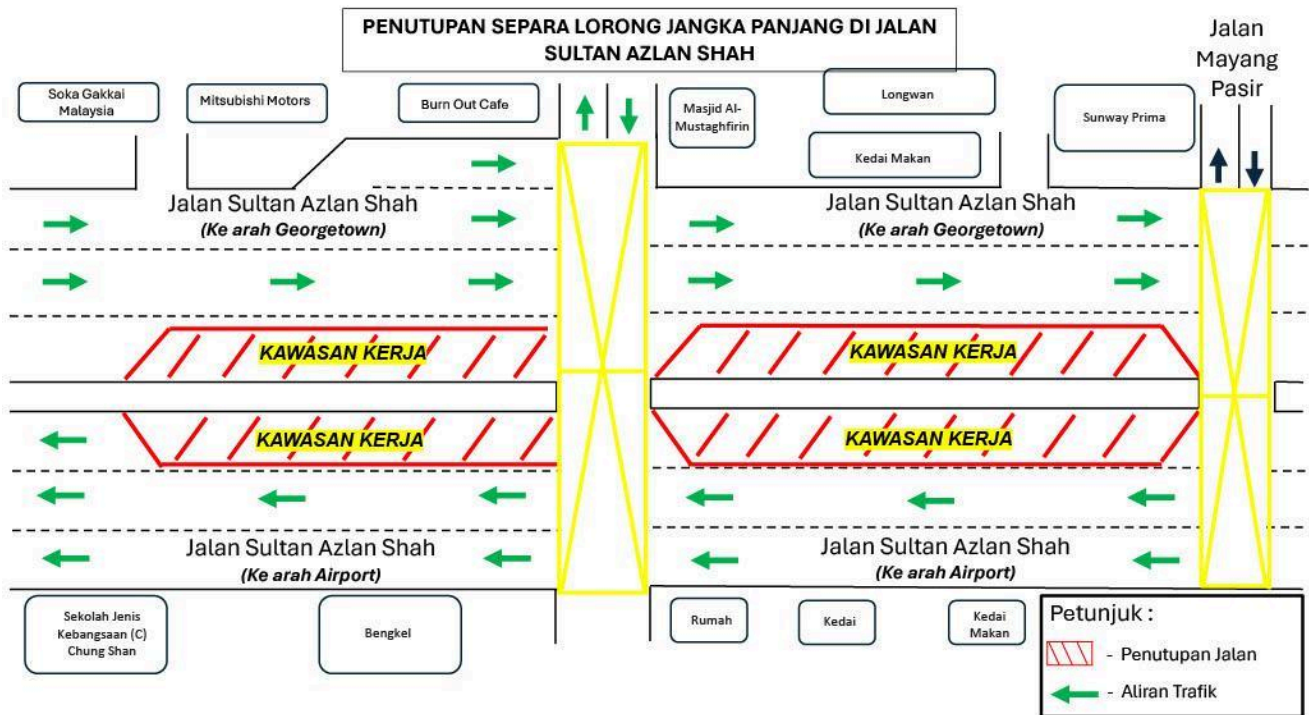
Penutupan ini akan melibatkan laluan laju di kedua-dua arah sepanjang tiga (3) kilometer, di antara **Lapangan Terbang Antarabangsa Pulau Pinang** dan **Persimpangan Lampu Isyarat Jalan Mayang Pasir**. Bagaimanapun, dua lorong di kedua-dua arah akan sentiasa dibuka sepanjang tempoh penutupan ini (seperti yang ditunjukkan oleh anak panah HIJAU dalam peta).

Penutupan ini diperlukan untuk memberi laluan kepada kerja-kerja awalan bagi Projek LRT Pulau Pinang : Laluan Mutiara termasuk kerja-kerja penebangan pokok, siasatan tapak dan pemindahan utiliti.

Pengguna jalan raya dinasihatkan untuk mematuhi arahan papan tanda trafik dan pengawal bendera yang bertugas untuk membantu melancarkan kawalan trafik dan memastikan keselamatan pengguna kenderaan di laluan tersebut. Untuk maklumat lanjut, sila rujuk peta di bawah.

Kami memohon maaf atas sebarang kesulitan.

Untuk sebarang pertanyaan sila hubungi MRT Careline 1-800-88-6782 atau emel kepada [feedback\\_pml@mymrt.com.my](mailto:feedback_pml@mymrt.com.my)



**PETA: PENUTUPAN SEPARA LALUAN JANGKA PANJANG DI JALAN SULTAN AZLAN SHAH (DUA HALA) – SUNGAI TIRAM**

(SUNGAI TIRAM)

**LONG-TERM PARTIAL LANE CLOSURES ALONG JALAN SULTAN AZLAN SHAH (BOTH DIRECTIONS)  
(SUNGAI TIRAM)**

<b>Date</b>	22 September 2025 – 31 December 2025
<b>Time</b>	24 hours
<b>Duration</b>	Three (3) months and Ten (10) days
<b>Reason</b>	To facilitate preliminary works for the LRT Penang: Mutiara Line (PML) project, including tree cutting, soil investigation and utility relocation.

Please be informed that the long-term partial lane closures on both directions along **Jalan Sultan Azlan Shah**, near the **Sungai Tiram area**, will be implemented from **22 September 2025 to 31 December 2025**. The closures will be carried out for 24 hours a day over a period of three (3) months and ten (10) days. The traffic management plan is as follow:

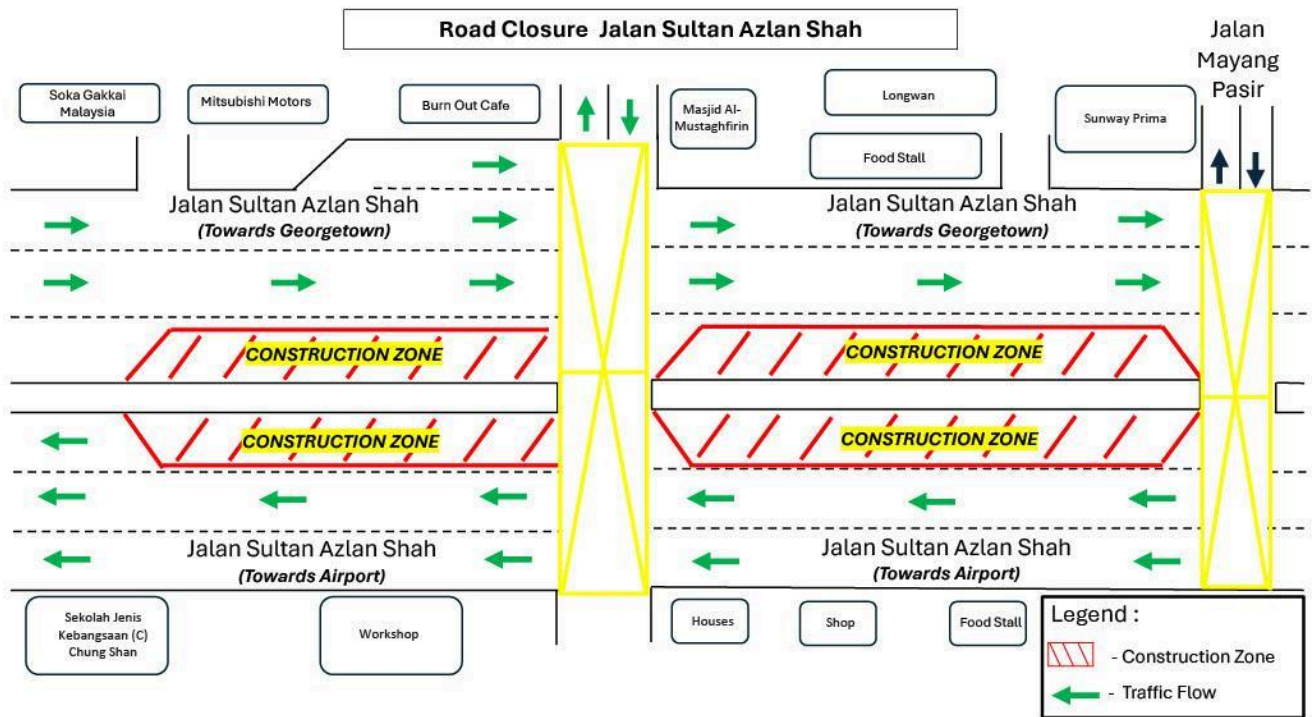
During the implementation of the lane closures, the **fast lanes in both directions**, along the stretch between **Penang International Airport** and the **Jalan Mayang Pasir Traffic Light Junction will be affected**. Two lanes at both directions will remain open during this period (as indicated by the GREEN arrows on the map).

The closure is necessary to facilitate preliminary works for the Penang Light Rail Transit (LRT) Project: Mutiara Line – Package CMC1, including tree felling, site investigation, and utility relocation works.

Motorists are advised to follow directional signage. During the closure period, the PML Project Emergency Response Team will be on-site to assist with traffic management. Safety barriers, traffic cones and flagmen will also be deployed to ensure the safety of all road users. For further information, please refer to the map below.

We apologise for any inconvenience caused and thank you for your cooperation.

For enquiries, please contact MRT Careline at 1-800-88-6782 or email to [feedback\\_pml@mymrt.com.my](mailto:feedback_pml@mymrt.com.my)



LONG-TERM PARTIAL LANE CLOSURES ALONG JALAN SULTAN AZLAN SHAH  
 (BOTH DIRECTIONS) - SUNGAI TIRAM  
 (SUNGAI TIRAM)  
 (SUNGAI TIRAM)